

# LTI KA084T4



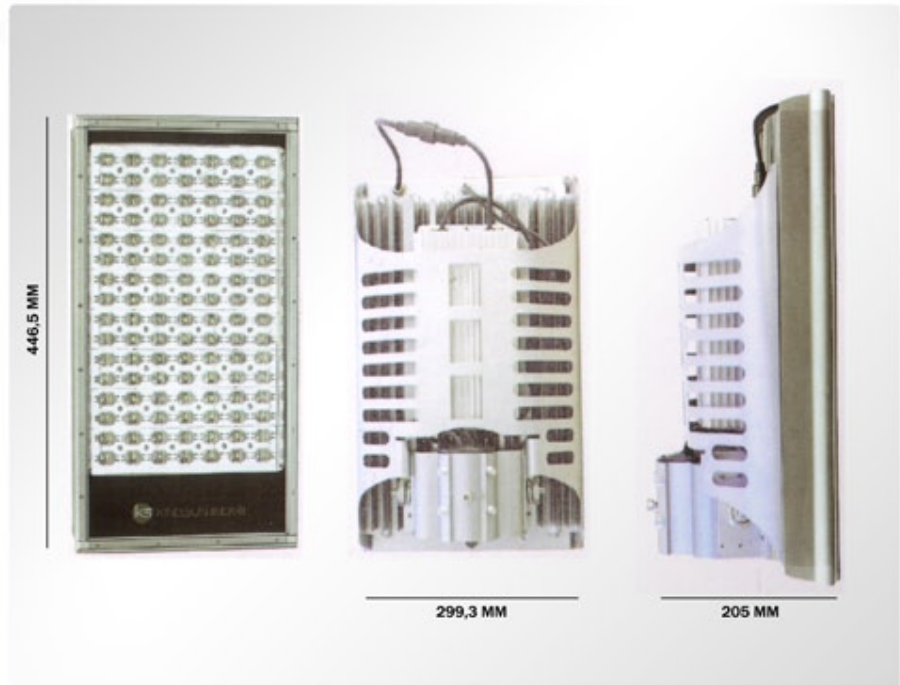
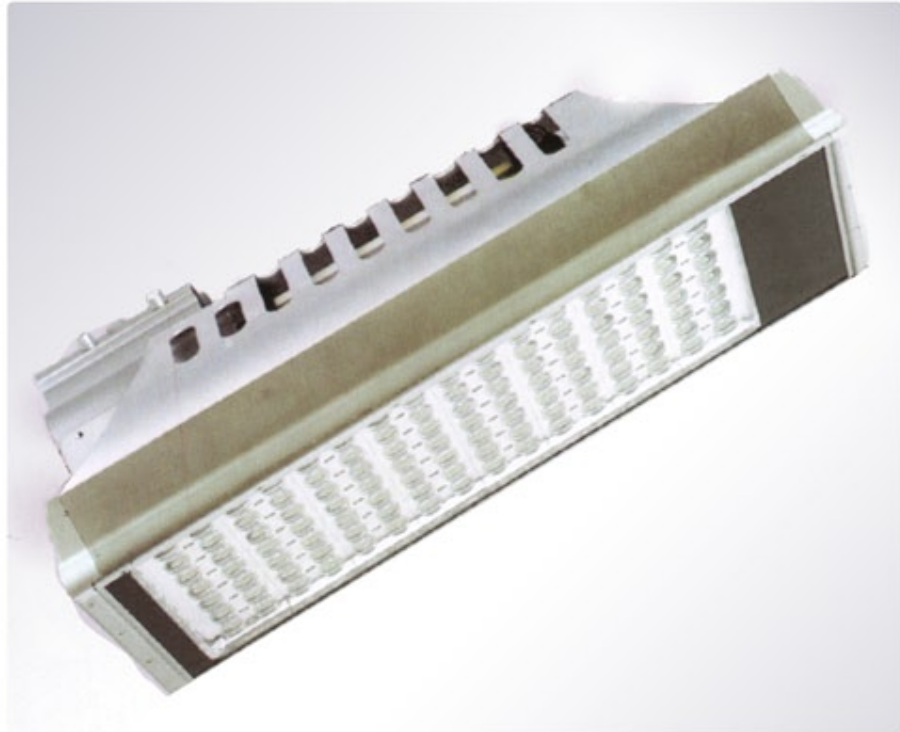
**LIGHT HAS NEVER BEEN THIS POWERFUL**

## QUALITY

## PERFORMANCE

## RELIABILITY

- High Quality LED Chips from CREE
- Energy Saving, Environmentally Friendly, Long Lifespan
- Made of Aluminium Alloy, Excellent Heat Conductivity
- Applied with Patented Quadric Optics Non-Imaging Lens, Luminaire Efficiency Over 90%
- Powered at AC Board Voltage Input With Constant Current Drive
- The Lamps Has Been Designed a passive ventilation system to Ensure the Dust Resistance, Water Resistance and Self Cleaning Ability
- Aesthetic Style



LTILED.COM

➤ TOOL FREE/ 1 888.401.3865  
WEB/ WWW.LTILED.COM

FAX/ 877.864.3659  
MAIL/ INFO@LTILED.COM

# LTI KA084T4

## OUR SUPERIOR HIGH-POWER TECHNOLOGY



## TYPICALS APPLICATIONS

- > Express Way
- > Branch Road, Urban Road
- > District Road

<b>Output Voltage</b>	DC53V
<b>Input Voltage</b>	AC 85 - 277 V 50 - 60 Hz
<b>Power Factor</b>	> 0.95
<b>Total Harmonic Distortion</b>	< 15%
<b>Power Efficiency</b>	94%
<b>LED Consumption</b>	84 W
<b>System Consumption</b>	89 W
<b>Luminaire Efficiency</b>	> 90lm/W
<b>LED Initial Flux</b>	8460 Lm
<b>LED luminous efficiency</b>	> 90%
<b>Color Temperature</b>	5000K - 5500 K
<b>Color Rendering Index (CRI)</b>	Ra > 75
<b>Light Distribution Curve</b>	Asymmetric ( Bat Wing ) Rectangular Beam
<b>Junction Temperature (Tj)</b>	< 75°C
<b>Operating Environment</b>	temps. -40°C to 40°C humidity 10% - 95%
<b>IP Rating</b>	IP66
<b>Life Time</b>	100 000 hours at TA = 30°C at more than 70% initial flux
<b>Material</b>	Aluminium Alloy
<b>Average Illumination</b>	6 meters / > 32,5 Lux 8 meters / > 18,5 Lux 10 meters / > 11,3Lux 12 meter / > 8 Lux
<b>Effective Illuminated Area</b>	6 meters / 9 x 34,2m <sup>2</sup> 8 meters / 12 x 45,6m <sup>2</sup> 10 meters / 15 x 57m <sup>2</sup> 12 meter / 18 x 68,4m <sup>2</sup>
<b>Installation</b>	Connect to a Ø 60mm arm branch
<b>Net Weight</b>	9,6 Kg